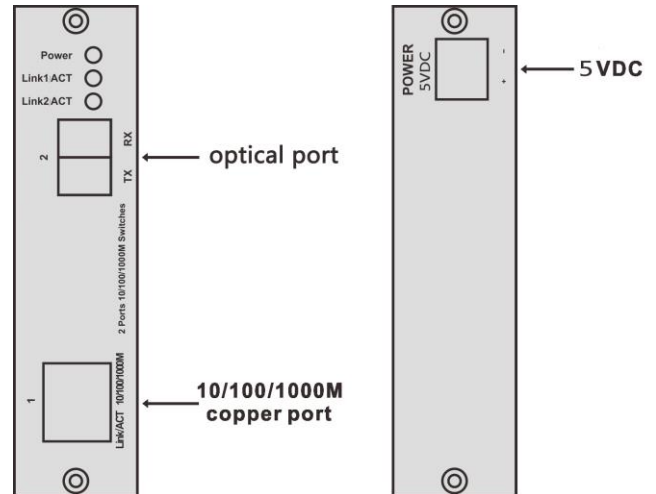


**2 Ports Cost-effective 10/100/1000BaseT(X) to 1000BaseFX Media Converter
1 x 10/100/1000BaseT(X) Ports, 1 or 2 Optical Ports**

PRODUCT PHOTO



CONNECTION DIAGRAM

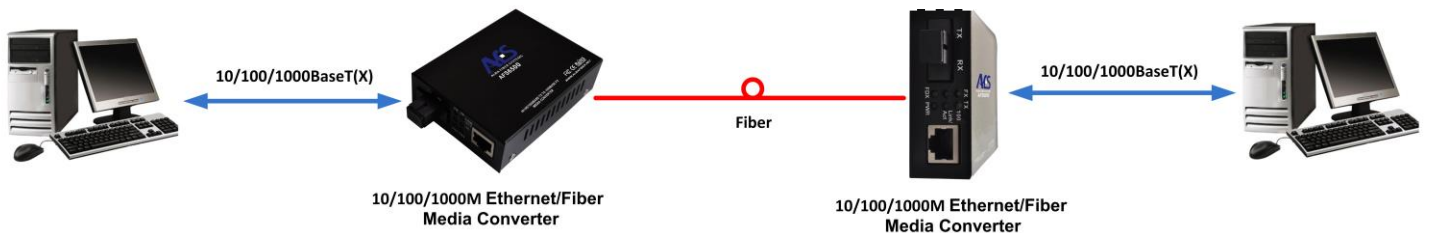


DESCRIPTION

The ALBA FIBER SYSTEMS Series AFS6500 are media converters designed to transmit and receive 10/100/1000Mbps data over one or two optic fibers. Available in commercial temperature grade, units feature half or full duplex mode and Auto-Negotiation to 10Mbps, 100Mbps or 1000Mbps Ethernet rate without adjustments. The optical interface operates at a 1000Mbps rate. Plug-and play design ensures ease of installation and no user electrical or optical adjustments are required. Features included are low power consumption, LED indicators for monitoring equipment link and performance operating status and auto resettable voltage transient fuses. The Series AFS6500 are outstanding products for transmission of 10/100/1000Mbps Ethernet signals.

FEATURES

- 10/100/1000Mbps Ethernet
- Electrical port supports Auto-Negotiation for 10Mbps or 100Mbps or 1000Mbps, full or half duplex mode
- Optical port supports 1000Mbps full duplex data
- Automatic MDI/MDI-X crossover cables
- Transparent to data encoding/compatible with major data protocols; IEEE 802.3 compliant.
- No Electrical or Optical User Adjustments
- Performance and Link Status Indicator LEDs
- Voltage Transient Protection on Power/Signals
- 1 or 2 fiber Versions, SC
- Auto Resettable Fuses on Power Lines
- Designed with Lowest Power Consumption
- 5VDC Input Voltage (Standalone)
- Compliance with CE, FCC



2 Ports Cost-effective 10/100/1000BaseT(X) to 1000BaseFX Media Converter 1 x 10/100/1000BaseT(X) Ports, 1 or 2 Optical Ports

DATA

Data Interface	Ethernet
Data Rate	10/100/1000 Mbps

CONNECTORS

Optical	SC, 1 or 2 Fibers
Power	Terminal Block
Electrical	RJ-45

OPTICAL PARAMETERS

Fiber Type	Singlemode or Multimode
Wavelengths (MM)	850nm/1310nm
Wavelengths (SM)	1310nm/1550nm

PoE PARAMETERS

Standard	IEEE802.3at
Power of PoE+	48V, 25.5W

ELECTRICAL & MECHANICAL

Input Power	5VDC
Power Consumption	27.5W Max with PoE+ on all ports; 2W Max w/o PoE
Current Protection	Auto Resettable Solid - State Current Limiters
Dimensions (L x W x H)	2.75 x 4.1 x 1.0in (70 x 104 x 26mm)
Weight	12oz /350g

ENVIRONMENTAL

MTBF	>100,000 hours
Operating Temp.	32°F to 130°F; 0°C to 55°C
Storage Temp.	-13°F to 212°F; -25°C to 100°C
Relative Humidity	0% to 95% (non-condensing)
Compliance	CE, FCC

ORDER INFORMATION

MODEL	DESCRIPTION	# FIBER PORT	# COPPER PORT	OPTICAL BUDGET	MAXIMUM DISTANCE
AFS6500-1S-2SC	10/100/1000BaseT(X) to 1000BaseFX Media Converter	2	1	10dB	MM, 0.6miles (1 Km)
AFS6500-2S-2SC	10/100/1000BaseT(X) to 1000BaseFX Media Converter	2	1	10dB	SM, 12 miles (20 Km)
AFS6500-2S-1ASC	10/100/1000BaseT(X) to 1000BaseFX Media Converter	1	1	10dB	SM, 12 miles (20 Km)
AFS6500-2S-1BSC	10/100/1000BaseT(X) to 1000BaseFX Media Converter	1	1	10dB	SM, 12 miles (20 Km)
AFS6500-1S-2SC-PoE+	10/100/1000BaseT(X) to 1000BaseFX Media Converter	2	1 with PoE+	10dB	MM, 0.6 miles (1 Km)
AFS6500-2S-2SC-PoE+	10/100/1000BaseT(X) to 1000BaseFX Media Converter	2	1 with PoE+	10dB	SM, 12 miles (20 Km)
AFS6500-2S-1ASC-PoE+	10/100/1000BaseT(X) to 1000BaseFX Media Converter	1	1 with PoE+	10dB	SM, 12 miles (20 Km)
AFS6500-2S-1BSC-PoE+	10/100/1000BaseT(X) to 1000BaseFX Media Converter	1	1 with PoE+	10dB	SM, 12 miles (20 Km)

AFS6500 1=MM(1KM), 2=SM (20Km) 3=SM(40Km) 4=SM(60Km) 5=SM(80Km);

S=Standalone, C=Card (rackmount) ; 2= 2 fibers, 1= 1 fiber; 1A1310/1550nm, 1B=1550/1310nm